



Starnet Access Flooring

Low-Profile Wire Management System

PowerTra<sup>XX</sup>  
BOMERIS





Easy to install, completely adaptable, low-profile wire management flooring system for new construction and renovation to existing office buildings

TV News Station  
Columbus, OH  
5,283 sq. ft. - 2017



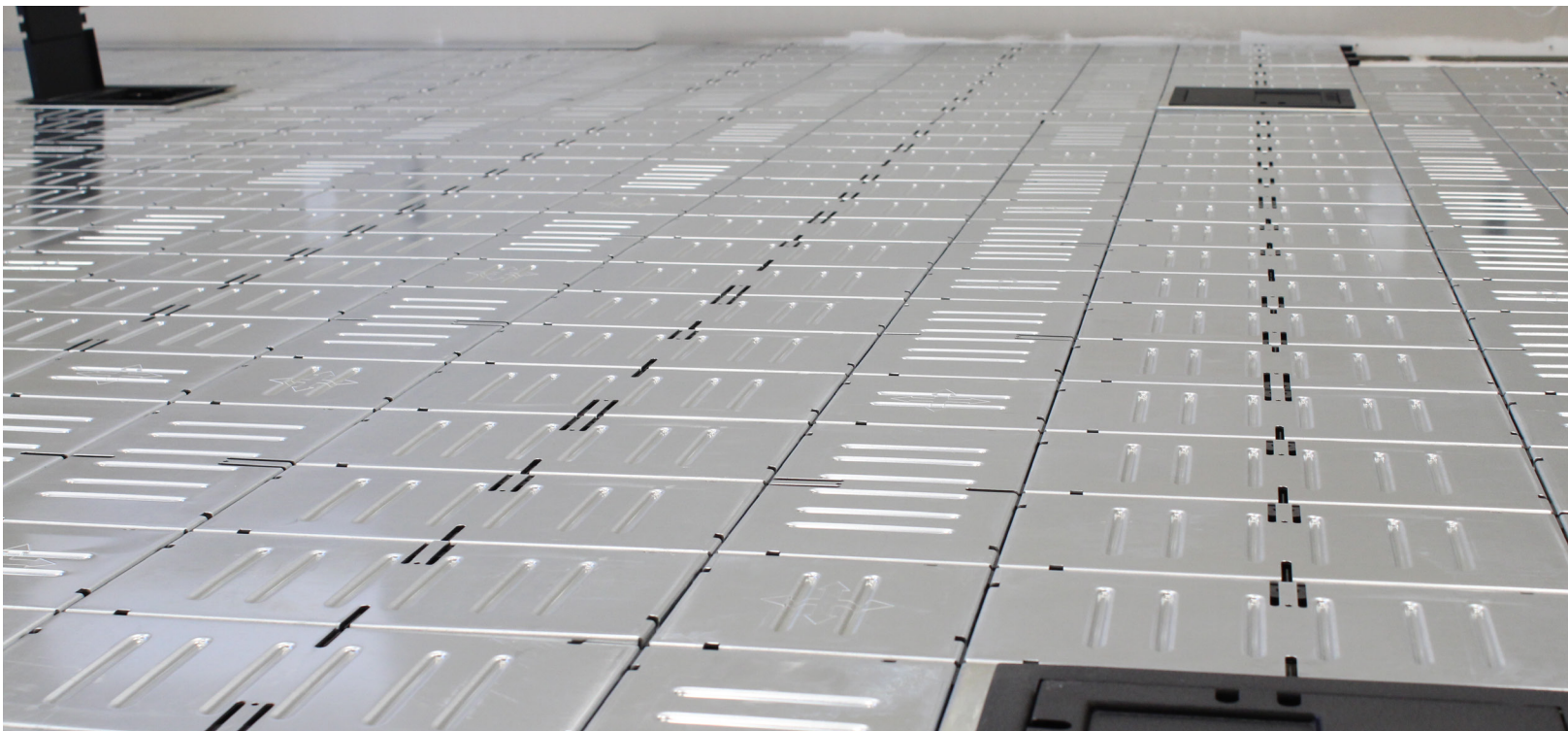
# Starnet low-profile flooring unequalled adaptability and access

**ASM** Modular Systems, Inc. is one of the largest access floor companies in North America, specializing in the data center and office market. As a wholly owned subsidiary of the [Kingspan Group](#), ASM offers distribution and installation capabilities around the globe. Renown for experience, quality and engineering, ASM has become the product of choice for many data center providers and office spaces alike.

We are therefore proud to present our **new** offering which addresses cable management and accessibility needs for clients with restrictive floor to ceiling heights. Starnet **PowerTraXX** - as low as 1 ½", easy to install, fully modular electrical system. The solution is Starnet **PowerTraXX**.



# PowerTraXX™





## Where can Starnet Low-Profile System be used?

Manufacturing & Assembly Areas  
911 CALL CENTERS  
Casino  
LIBRARIES  
APPLICATIONS ARE LIMITLESS  
STORAGE FACILITIES  
Training Facilities  
Retail & Wholesale Stores  
Displays/Exhibits  
Conference Rooms  
Class A Office Buildings  
Courtrooms  
K-12 Schools  
Classrooms & Laboratories  
Universities



The ASM Starnet floor has the best “walk-ability” in its class. Its strength and flexibility provides a quiet and solid feel underfoot.

Super quiet!





# Complete flexibility, prefabricated, high strength and no adhesives or fasteners



## PERFORMANCE DATA

- Concentrated Live Load - 2,000 lbf (8.90 kN)  
Per IBC Table 1607.1
- Concentrated Point Load - 500 lbf (2.22 kN)
- Uniform Live Load - 2,000 lbf (8.90 kN)
- Ultimate Load Safety Factor - 2-to-1 Min.
- Rolling Loads - 10 Pass  
CISCA Wheel A (3" dia.) - 460 lb.  
8" dia. x 2" Semi-Pneumatic - 500 lb.

## PHYSICAL DATA

- Weight of system 3.7 psf (18.1 kg/m<sup>2</sup>)
- Height of system - 1 ½" (40 mm)  
2" (50 mm)
- Fire rating of bare panel:  
Class A Flame Spread  
Non-Combustible Materials

## FEATURES

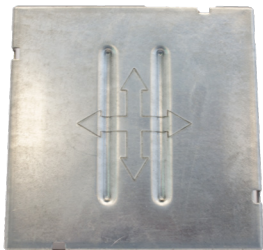
- Available at 1.5" FFH of 2" FFH
- Prefabricated before shipment
- Easy to install
- Heavy Duty quick-connect steel plates
- Easy to change layout and cable wiring
- No adhesive required
- No underlayment required
- No fasteners required

Starnet is composed of a:

- Rectangular plate
- Square plate
- Resin base for 1.5" or 2" FFH  
(40mm & 50mm)

Easy as

1



2



3



Available in 1.5" & 2" FFH



Introducing...

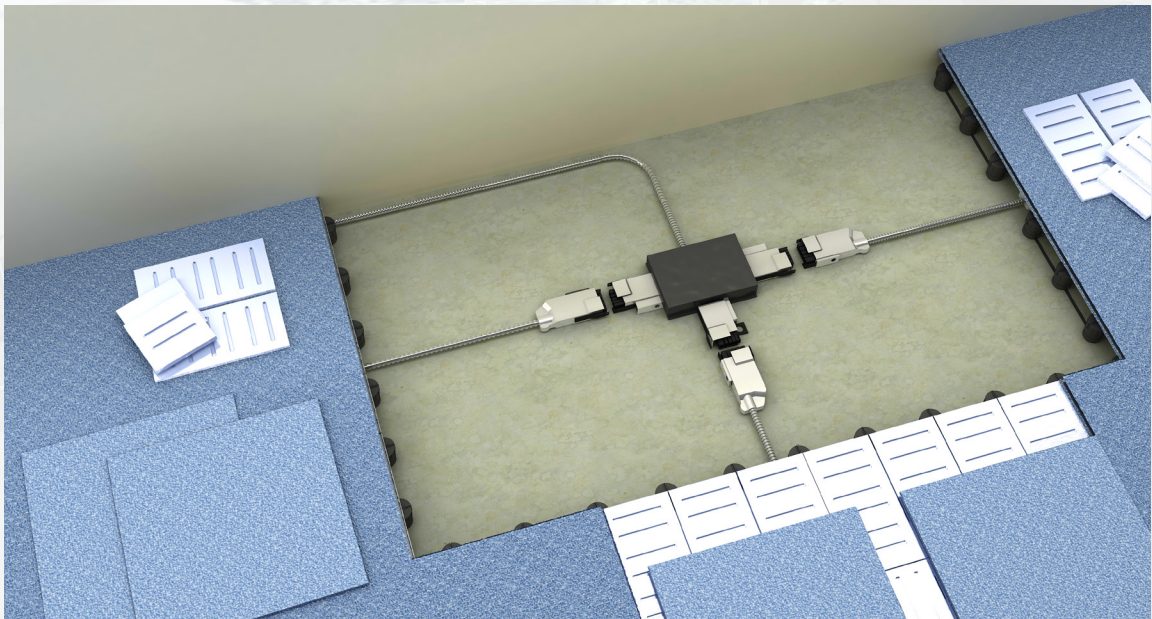
# PowerTra™

Em**POWER**ing your business



Homerun Cable to Electrical Panel - (3 circuits each)

## Flexibility



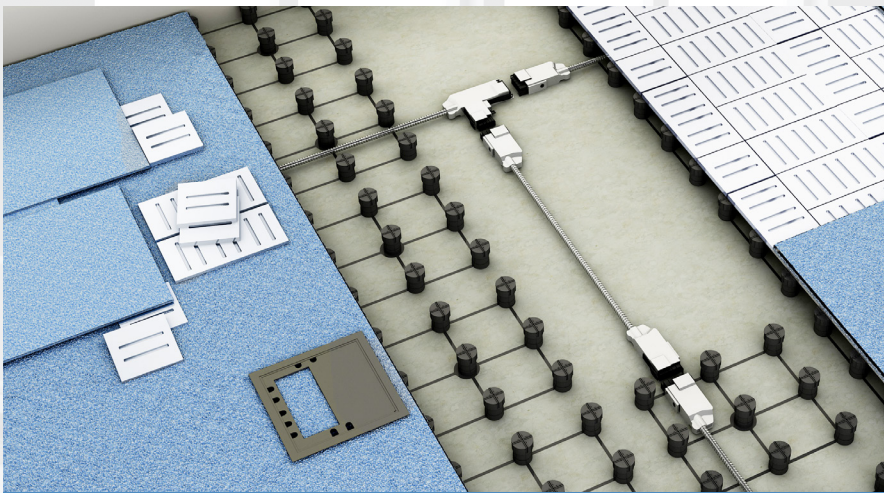
3 - Port Distribution Box



## Plug - N - Play



Power to Systems Furniture



Single & Double Headed Extender Cable

## Wire Management

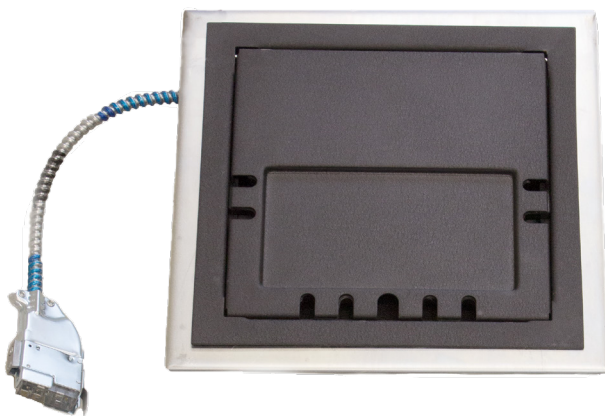


Power to Slot Banks



# A fully flexible wire management system

ASM's Starnet **PowerTraXX** plug-and-play modular electrical system is specifically designed for low height floors. **PowerTraXX** connects the service boxes in the general office layout to the electrical panel via a 3 port distribution box and extender cables. The extender cables have been engineered to be plugged and unplugged while "hot", allowing fast reconfiguration or modification to your floor plan. This provides the flexibility you need and the peace of mind that any future additions will be simple, non-disruptive and inexpensive.



*Flush mounted power, voice & data boxes*

## PHYSICAL DATA

- Overall dimension - 11 ½ x 11 ½"
- Floor opening - 10" x 10"
- Height of box - Fits into ASM 1 ½" FFH Low-Profile Floor System
- Load rating of lid - 1,000 lbf (4448 N)

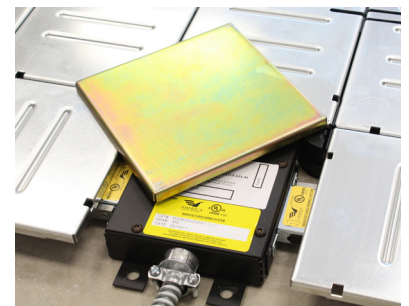
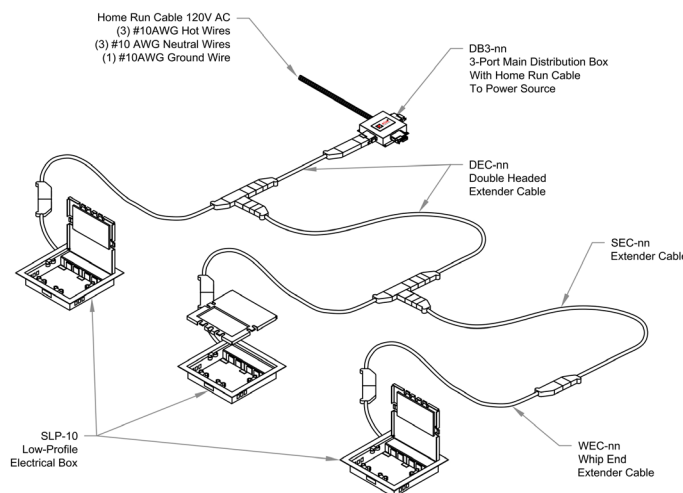
## ELECTRICAL DATA

- 20amp/120V AC
- Extended cables provided in 5' increments
- Four simplex receptacles provided
- 3 wire 12 Ga extender cables
- 7 wire 10 Ga homerun cable
- Standard with 12" long Whip End Extender Cable

## FEATURES

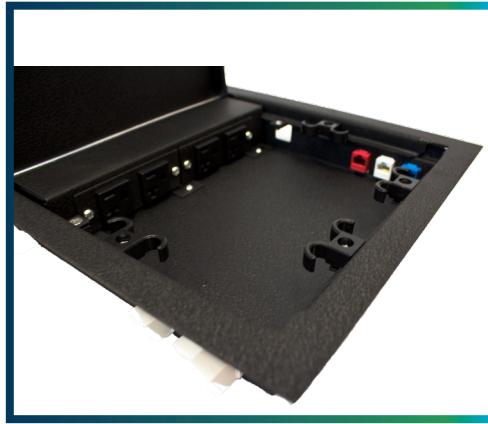
- Standard with four 20A simplex receptacles
- Lid hinges open or lifts off
- Recessed lid to accept carpet/tile insert
- Powder coat epoxy paint finish
- Welded heavy gauge steel construction
- 6 openings for Keystone jack couplers
- Lid can be closed when in use

## POWERS UP TO 9 BOXES

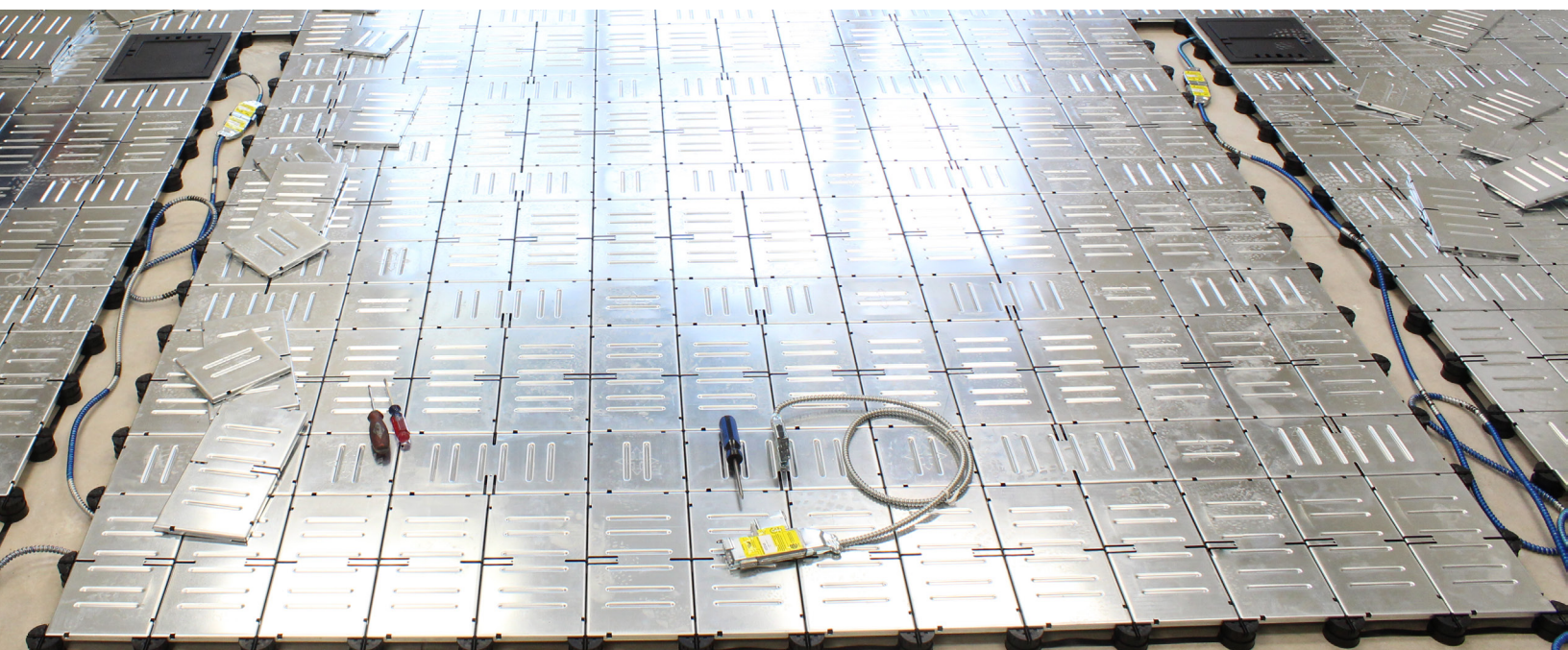
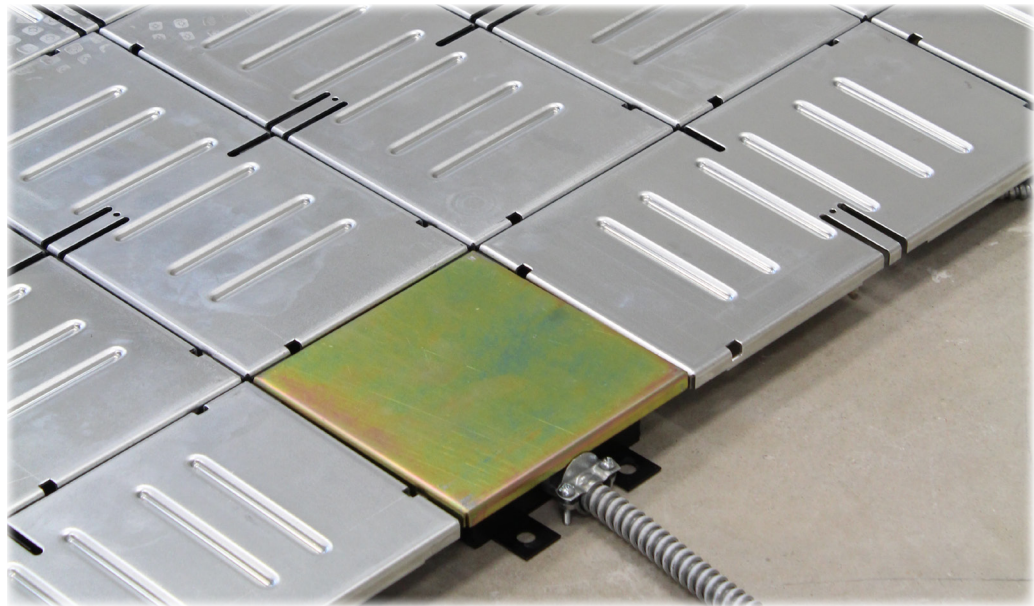
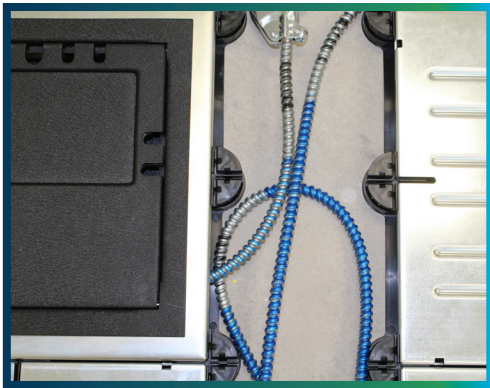


*Distribution box cover for easy identification*





Easy access power/  
voice & data box



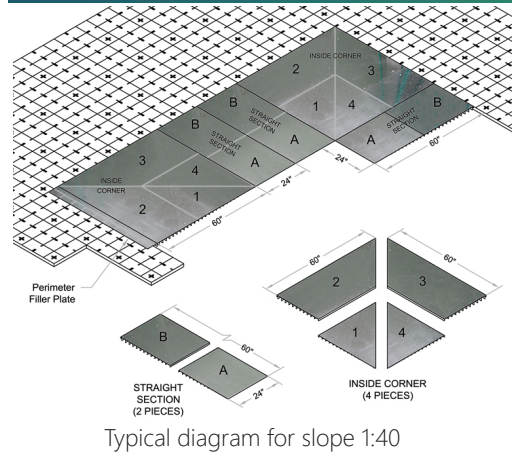
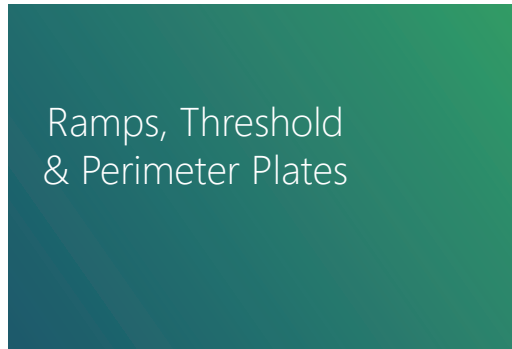


## Smooth transition



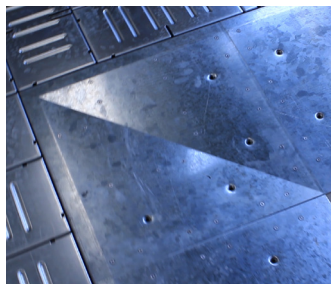
Ramp components for 1:12, 1:20, or 1:40

- . Straight
- . Inside corner
- . Outside corner

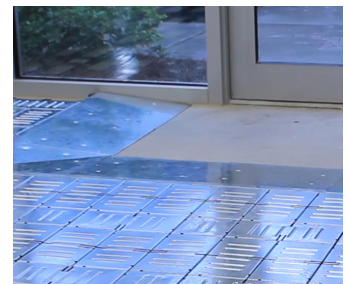


## Smooth and structurally sound transitions

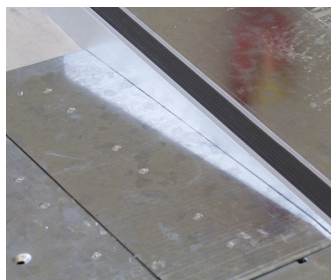
SLP-40/50  
Low-Profile System  
Inside Corner &  
Outside Corner



SLP-40/50  
Low-Profile System  
Straight Ramp



Extruded Aluminum  
Threshold/Fascia with  
Rubber Strip for  
doorways and open  
perimeters



Galvanized Steel  
Filler Plate to  
be Cut-to-Fit at  
Perimeter Walls

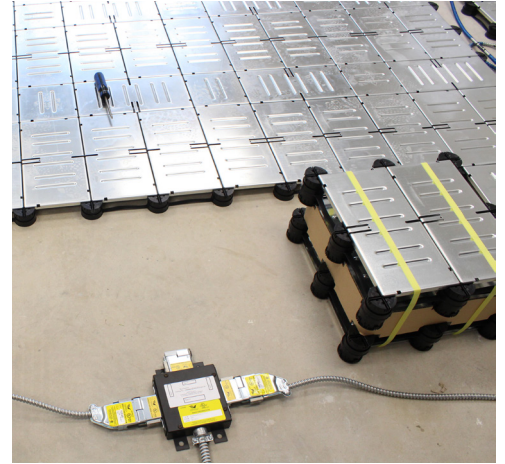




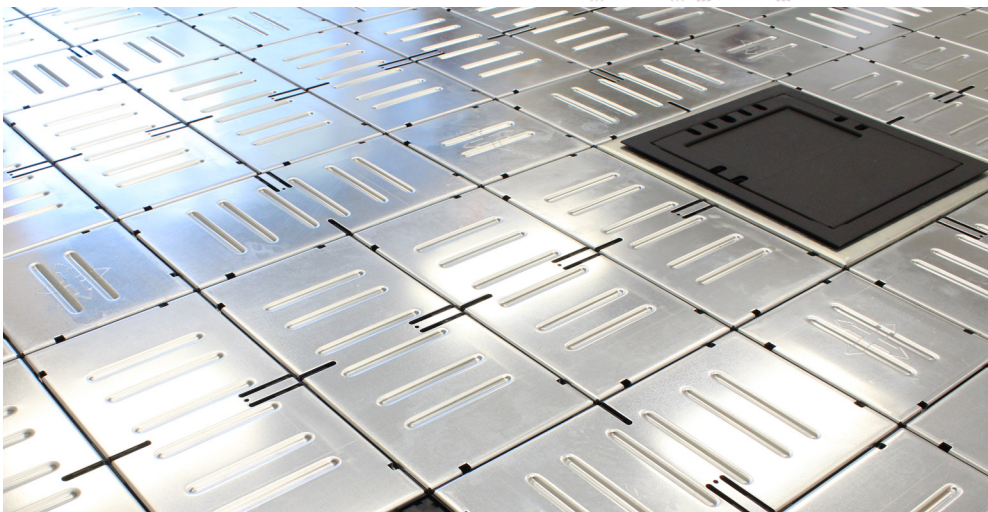
# Installation



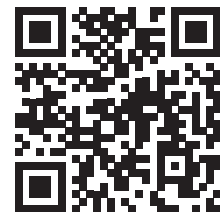
Easy to install  
No adhesives, underlayment,  
or fasteners required



PowerTra<sup>XX</sup>  
BOMERIS<sup>XX</sup>



Go to [www.starnetaccessfloor.com](http://www.starnetaccessfloor.com)  
to view our installation video or  
scan the QR code below.





Contact one of our Starnet **PowerTraXX** specialists:

---

Ph: 843-534-1110

Fax: 843-534-1111

Email: [info@asmproducts.com](mailto:info@asmproducts.com)

Websites: [www.starnetaccessfloor.com](http://www.starnetaccessfloor.com)

[www.asmproducts.com](http://www.asmproducts.com)

---

Location:

9500 Industrial Center Drive

Ladson, SC 29456

